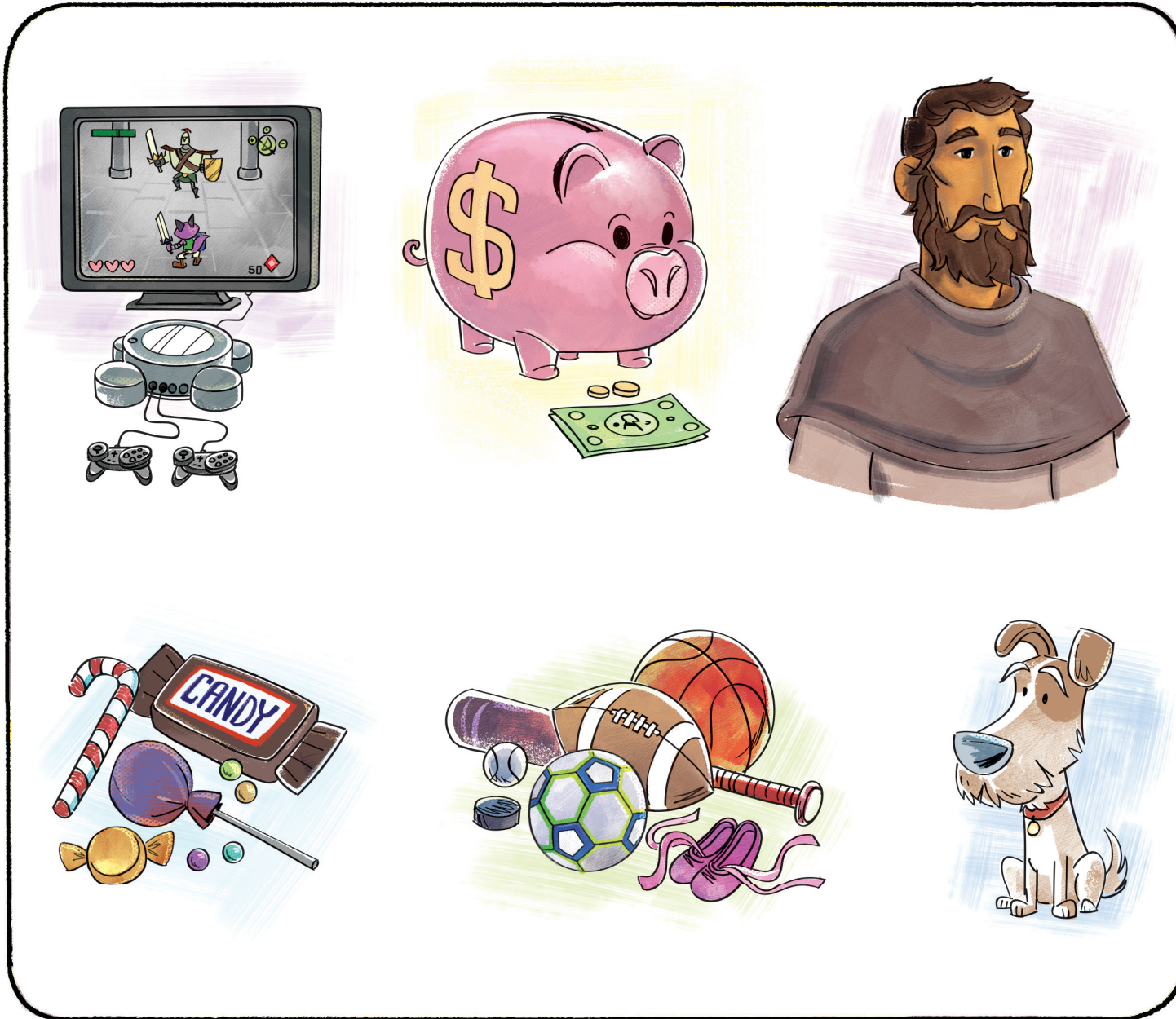


Greatest to Least

INSTRUCTIONS: Number each picture below to show what you value from most (1) to least (6).



BIBLE STORY SUMMARY:

- John's disciples were concerned about people following Jesus instead of John
- John said that Jesus is more important than anyone, including John himself.
- John the Baptist told people to follow Jesus.

KEY PASSAGE: John 3:30

BIG PICTURE QUESTION:

- Why did Jesus become human?
Jesus became human to obey His Father's plan and rescue sinners.

FAMILY DISCUSSION STARTERS:

- Why is Jesus the most important person?
- How can we point other people to Jesus?
- What does it mean to follow Jesus?

FAMILY ACTIVITY:

- Play a following or instruction game with your family—like follow the leader or Simon says. Discuss what it means to follow Jesus. Ask your kids to offer examples of how they can put Jesus first in their lives.



DOWNLOAD the
LIFEWAY KIDS APP

